

GUESS

WARRANTY BOOKLET
GUESS WATCHES • 2 YEAR LIMITED WARRANTY

■ CONTENTS

■ WOMENS	3-11
HIGH PERFORMANCE FEATURES	4-5
OPERATING INSTRUCTIONS	6
DAY / DATE / 24 HOUR	7-8
6, 12 TWO-EYE CHRONOGRAPH WITH DATE	8-9
ANA-DIGIT WATCH	10
DIGITAL WATCH	11
■ MENS	12-39
HIGH PERFORMANCE FEATURES	13-14
OPERATING INSTRUCTIONS	15
MULTIFUNCTIONS	15-20
6, 12 TWO-EYE CHRONOGRAPHS	21-24
6, 9 & 12 THREE-EYE CHRONOGRAPH	25-31
3, 6, 9 & 12 FOUR-EYE CHRONOGRAPH	32-33
ANA-DIGIT WATCH	34
DIGITAL WATCH	35-39
■ INTERCHANGEABLES	40-42
HOW TO REMOVE STRAPS & METAL BANDS	41
HOW TO REPLACE TOP RINGS	42
■ CARE & WARRANTY	43-47
WATCH CARE	44-45
WARRANTY & REPAIR INFORMATION	46
WATCH REPAIR FORM	47



GUESS

■ WOMENS

2 Year Limited Warranty

Warranty details at the end of this booklet.



HIGH PERFORMANCE FEATURES:

All GUESS watches are equipped with Long Life batteries
2-3 Year battery life with normal use.

GUESS
WATERPRO

Watches marked GUESS Waterpro are:

- **330 feet/100 meters (10 ATM) Water Resistant**
Suitable for swimming
- Stainless Steel Bracelets
- Water resistant genuine leather straps

GUESS
STEEL

Watches marked **GUESS**
STEEL are:

- Water Resistant as marked on case back
330 feet/100 meters (10 ATM)
Suitable for swimming
100 feet/30 meters (3 ATM) Rectangle styles
Splash proof, not suitable for swimming
- Stainless Steel case and bracelets

INDIGLO[®]
night-light

Watches marked **INDIGLO**[®] night-light are:

- Useful in low-light conditions. Press & hold crown to illuminate dial. Do **NOT** do under water.
- **100 feet/30 meters (3 ATM)**
Splash proof, not suitable for swimming



GUESS

Watches that are NOT marked as previously noted are:

Up to 100 feet / 30 meters (3ATM) Splash proof, not suitable for swimming

NOTE: If the crown cannot easily be pulled away from the case when setting the time, gently unscrew the crown by turning it towards you. After setting the watch, gently push the crown in while screwing it back into the watch case. The crown must be fully screwed in to the case to maintain water resistance.

OPERATING INSTRUCTIONS



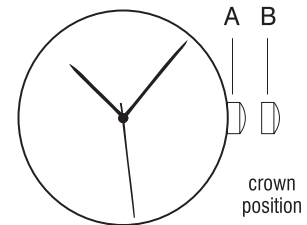
TO FIND THE INSTRUCTIONS
THAT APPLY, SIMPLY MATCH YOUR WATCH
TO THE DIAGRAMS ON THE FOLLOWING PAGES.

SIMPLE TIME / MINI SWEEP

To set the time:

1. PULL out crown to B position.
2. TURN crown either way to correct time.
3. Push in crown to A position.

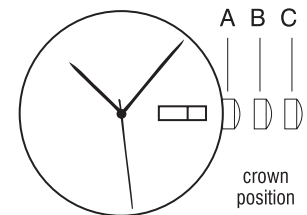
Note: Mini sweep subdial measures seconds.



DATE / DAY & DATE

To set the time:

1. PULL out Crown to C position.
2. TURN Crown either way to correct time.
3. PUSH in Crown to A position.



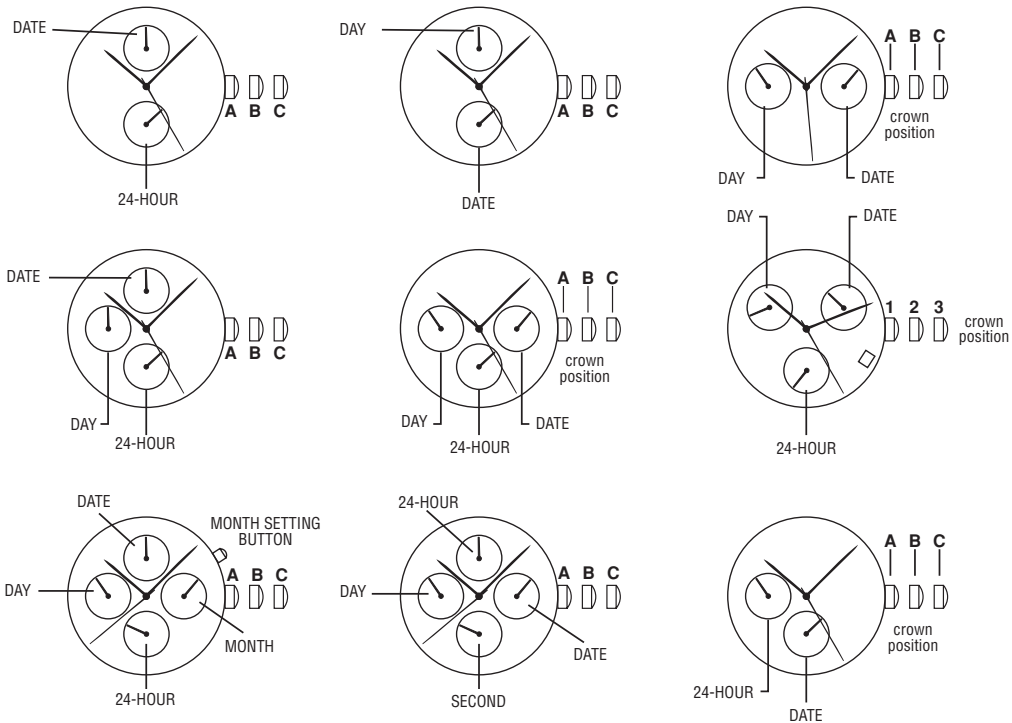
To set the calendar / date:

1. PULL out Crown to B position.
2. TURN Crown away from you to correct date.
3. TURN Crown towards you to correct the day.
4. PUSH in crown to A position.

NOTE: The date changes automatically every 24 hours.

On "Day & Date" watches, the days of the week are in English + French. Once set in English, the consecutive days will continue to be in English.

DAY / DATE / 24 HOUR



To set time:

1. PULL out crown to C position.
2. TURN crown either way to correct time.
3. PUSH in crown to A position.

To set date:

NOTE the date changes automatically every 24 hours.

1. PULL out crown to B position.
2. TURN crown clockwise to correct date.
3. PUSH in crown to A position.



To set day:

1. PULL out crown to C position.
2. Advance time 24 hours to change the day.
3. PUSH in crown to A position.

NOTE: 24 hour indicator can change only when setting the time.

To set month:

Push month setting button until the small hand of month is set to the correct month.

6,12 TWO-EYE CHRONOGRAPH WITH DATE

Crown position “A” , “B” & “C”.
Pushers “A” (top) & “B” (bottom).
12 o'clock eye “1 minute up to maximum 60 minute”.
6 o'clock eye “second”.

This chronograph watch has 3 functions:

TIME, CALENDAR, STOPWATCH.

TIME

To set the time:

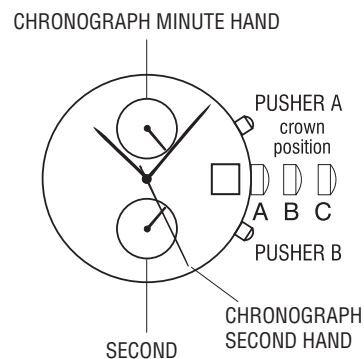
1. PULL crown to “C” position.
2. TURN crown either way to correct time.
3. PUSH crown in to “A” position, small second hand begins to run.

CALENDAR

To set the calendar:

1. PULL out crown to “B” position.
2. TURN crown clockwise to correct date.
3. PUSH in crown to “A” position.

NOTE: The date changes automatically every 24 hours.





STOPWATCH

The stopwatch is capable of measuring:

1/1 second elapsed up to maximum of 60 minute (top eye).

BEFORE USING THE STOP WATCH, reset the stopwatch hands to the “60” and “0” positions.

To reset stopwatch hands:

1. PULL crown to position “C”.
2. PRESS pusher “A” intermittently until the chronograph second hand is reset to “0”.

Standard stopwatch measurement:

1. PRESS pusher “A” to start timing.
2. PRESS pusher “A” to stop timing.
3. PRESS pusher “B” to reset.

Accumulated elapsed time measurement:

1. PRESS Pusher “A” to start timing.
2. PRESS Pusher “A” to stop timing.
3. PRESS pusher “A” to restart timing.
4. PRESS Pusher “A” to stop 2nd timing.
5. PRESS Pusher “B” to reset.

ANA-DIGIT



FEATURES

Hour, Minute, Second

Month, Date

Back Light (EL)

NORMAL TIME MODE

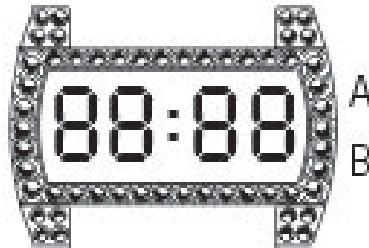
1. PRESS S1 once to view Month & Date
2. PRESS S1 twice to view Second
3. PRESS S2 once, ""Time"" & ""Date"" mode will be displayed alternatively
PRESS S1 twice, back to Time mode"
4. PRESS EL to light-up display

SETTING SEQUENCE

1. PRESS S2 twice to set "Month"; Press S1 to advance
2. PRESS S2 once to set "Date"; Press S1 to advance
3. PRESS S2 once to set "Hour"; Press S1 to advance
4. PRESS S2 once to set "Minute"; Press S1 to advance
5. PRESS S2 once when setting is complete. Normal time will be displayed
(Press S1 if time mode does not flash).



DIGITAL



Features:

Hour, minute, seconds, month & date.

Setting Sequence:

1. PRESS "B" to get to Normal Time mode.
2. Set Month: PRESS "B" to "Month". PRESS "A" to advance.
3. Set Date: PRESS "B" to "Date". PRESS "A" to advance.
4. Set Hour: PRESS "B" to "Hour". PRESS "A" to advance.
("A" =A.M., "P" =P.M., "H" =24 hour format)
5. Set Minute: PRESS "B" to "Minute". PRESS "A" to advance.
6. When hour & minutes are set, PRESS "A" to confirm.
7. Return to Normal Time: PRESS "B".

To view month & date from Normal Time mode, PRESS "A".

GUESS

■ MENS

2 Year Limited Warranty

Warranty details at the end of this booklet.



HIGH PERFORMANCE FEATURES:

All GUESS watches are equipped with Long Life batteries
2-3 Year battery life with normal use.

GUESS
WATERPRO

Watches marked GUESS Waterpro are:

- **330 feet/100 meters (10 ATM) Water Resistant**
Suitable for swimming
- Stainless Steel Bracelets
- Water resistant genuine leather straps

GUESS
STEEL

Watches marked **GUESS STEEL** are:

- Water Resistant as marked on dial and/or case back
330 feet/100 meters (10 ATM)
Suitable for swimming
100 feet/30 meters (3 ATM) Rectangle styles
Splash proof, not suitable for swimming
- Stainless Steel case and bracelets

INDIGLO[®]
night-light

Watches marked **INDIGLO**[®] night-light are:

- Useful in low-light conditions. Press & hold crown to illuminate dial. Do **NOT** do under water.
- **100 feet/30 meters (3 ATM)**
Splash proof, not suitable for swimming



GUESS

Watches that are NOT marked as previously noted are:

Up to 100 feet / 30 meters (3ATM) Splash proof, not suitable for swimming

NOTE: If the crown cannot easily be pulled away from the case when setting the time, gently unscrew the crown by turning it towards you. After setting the watch, gently push the crown in while screwing it back into the watch case. The crown must be fully screwed in to the case to maintain water resistance.

OPERATING INSTRUCTIONS

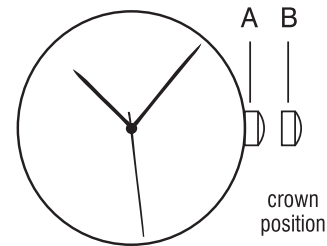


TO FIND THE INSTRUCTIONS THAT APPLY, SIMPLY MATCH YOUR WATCH TO THE DIAGRAMS ON THE FOLLOWING PAGES.

SIMPLE TIME / MINI SWEEP

To set the time:

1. PULL out crown to B position.
 2. TURN crown either way to correct time.
 3. Push in crown to A position.
- Note: Mini sweep subdial measures seconds.



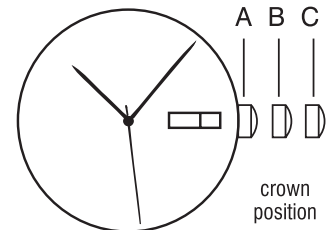
DATE / DAY & DATE

To set the time:

1. PULL out Crown to C position.
2. TURN Crown either way to correct time.
3. PUSH in Crown to A position.

To set the calendar / date:

1. PULL out Crown to B position.
2. TURN Crown away from you to correct date.
3. TURN Crown towards you to correct the day.
4. PUSH in crown to A position.

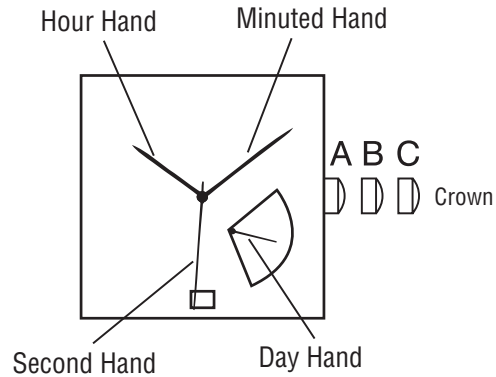


NOTE: The date changes automatically every 24 hours.

On "Day & Date" watches, the days of the week are in English + French. Once set in English, the consecutive days will continue to be in English.



DAY + DATE



To set time:

1. PULL out crown to C position.
2. TURN crown either way to correct time.
3. PUSH in crown to A position.

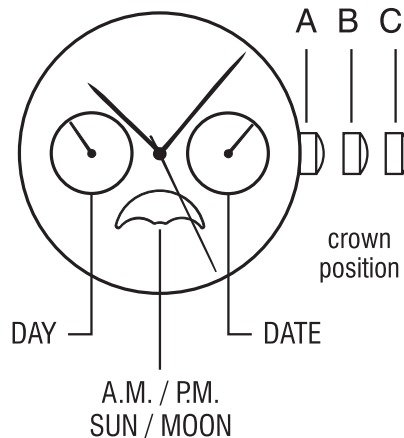
To set date:

1. PULL out crown to B position.
2. TURN crown towards you to correct date.
3. PUSH in crown to A position.

To set day:

1. PULL out crown to B position.
2. TURN crown away from you to change the day.
3. PUSH in crown to A position.

DAY / DATE /
A.M. /P.M. / SUN / MOON



To set the time:

1. PULL out Crown to C position.
2. TURN Crown clockwise to correct time. Day / am / pm / moon will also change.
3. PUSH in Crown to A position.

NOTE: Remember to set time for am or pm (sun or moon)

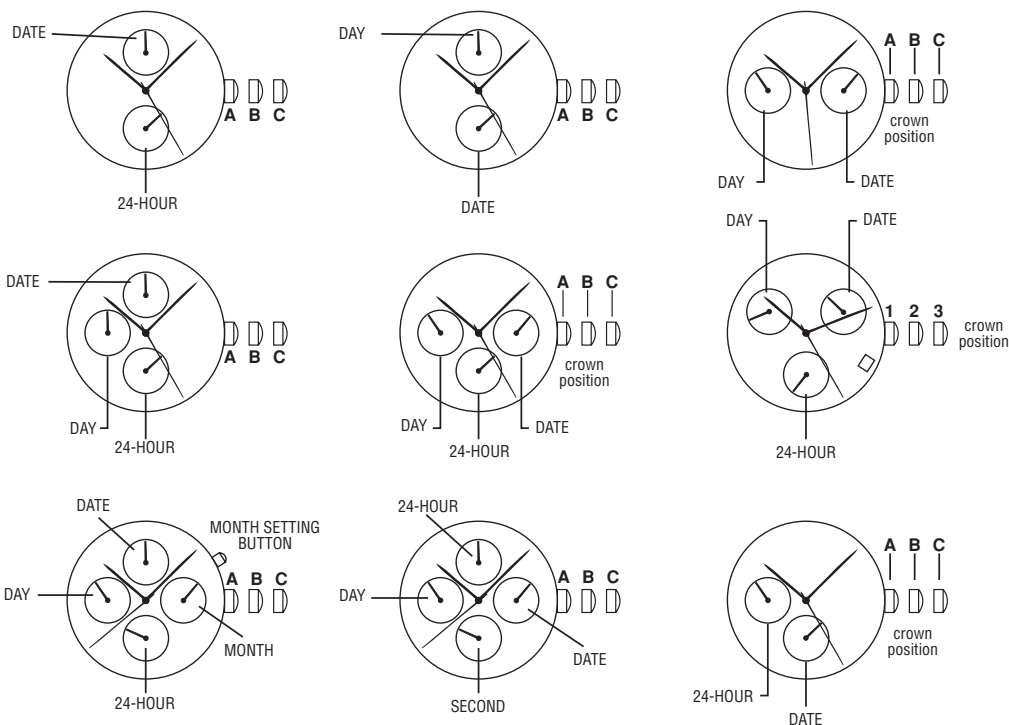
To set the date:

1. PULL out Crown to B position.
2. TURN Crown clockwise to correct date.
3. PUSH in crown to A position.

To set the day:

1. PULL out Crown to C position.
2. Advance time 24 hours to change the day.
3. PUSH in Crown to A position.

DAY / DATE / 24 HOUR



To set time:

1. PULL out crown to C position.
2. TURN crown either way to correct time.
3. PUSH in crown to A position.

To set date:

NOTE the date changes automatically every 24 hours.

1. PULL out crown to B position.
2. TURN crown clockwise to correct date.
3. PUSH in crown to A position.

To set day:

1. PULL out crown to C position.
2. Advance time 24 hours to change the day.
3. PUSH in crown to A position.

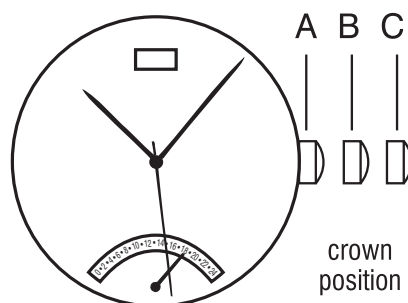
NOTE: 24 hour indicator can change only when setting the time.



To set month:

Push month setting button until the small hand of month is set to the correct month.

DATE / 24 HOUR



To set the time:

1. PULL out Crown to C position.
2. TURN Crown either way to correct time.
3. PUSH in Crown to A position.

To set the 24 hour indicator:

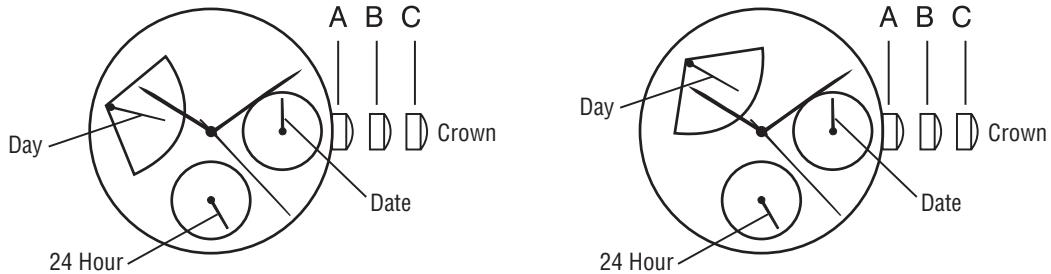
1. PULL out Crown to B position.
2. TURN Crown counter-clockwise to correct time.
3. PUSH in Crown to A position.

To set the date:

1. PULL out Crown to B position.
2. TURN Crown clockwise to correct date.
3. PUSH in Crown to A position.



DAY / DATE / 24 HOUR



To set the time:

1. PULL out Crown to C position.
2. TURN Crown clockwise/counter-clockwise to correct time.
3. PUSH in Crown to A position.

To set the date:

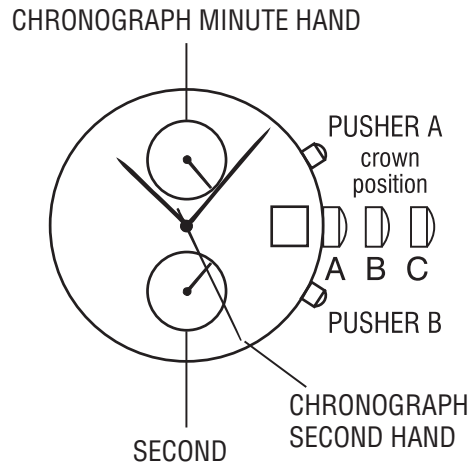
1. PULL out Crown to B position.
2. TURN Crown counter-clockwise to correct date.
3. PUSH in Crown to A position.

To set the day:

1. PULL out Crown to C position.
2. Advance time 24 hours to change the day.
3. PUSH in Crown to A position.

Note: 24 Hour indicator changes automatically when time is adjusted.

6,12 TWO-EYE CHRONOGRAPH WITH DATE



Crown position "A", "B" & "C".
Pushers "A" (top) & "B" (bottom).
12 o'clock eye "1 minute up to maximum 60 minute".
6 o'clock eye "second".

This chronograph watch has 3 functions:
TIME, CALENDAR, STOPWATCH.

TIME

To set the time:

1. PULL crown to "C" position.
2. TURN crown either way to correct time.
3. PUSH crown in to "A" position, small second hand begins to run.

CALENDAR

To set the calendar:

1. PULL out crown to "B" position.
2. TURN crown clockwise to correct date.
3. PUSH in crown to "A" position.

NOTE: The date changes automatically every 24 hours.



STOPWATCH

The stopwatch is capable of measuring:

1/1 second elapsed up to maximum of 60 minute (top eye).

BEFORE USING THE STOP WATCH, reset the stopwatch hands to the “60” and “0” positions.

To reset stopwatch hands:

1. PULL crown to position “C”.
2. PRESS pusher “A” intermittently until the chronograph second hand is reset to “0”.

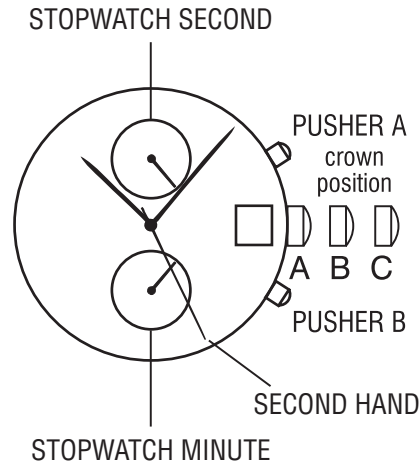
Standard stopwatch measurement:

1. PRESS pusher “A” to start timing.
2. PRESS pusher “A” to stop timing.
3. PRESS pusher “B” to reset.

Accumulated elapsed time measurement:

1. PRESS Pusher “A” to start timing.
2. PRESS Pusher “A” to stop timing.
3. PRESS pusher “A” to restart timing.
4. PRESS Pusher “A” to stop 2nd timing.
5. PRESS Pusher “B” to reset.

6,12 TWO-EYE CHRONOGRAPH WITH DATE



Crown position “A” , “B” & “C”.
Pushers “A” (top) & “B” (bottom).
6 o’clock eye “1 minute up to maximum 60 minute”.
12 o’clock eye “second”.

This chronograph watch has 3 functions:

TIME, CALENDAR, STOPWATCH.

TIME

To set the time:

1. PULL Crown to “C” position.
2. TURN Crown either way to correct time.
3. PUSH Crown in to “A” position, small second hand begins to run.

CALENDAR

To set the calendar:

1. PULL out Crown to “B” position.
2. TURN Crown clockwise to correct date.
3. PUSH in Crown to “A” position.

NOTE: The date changes automatically every 24 hours.



STOPWATCH

The stopwatch is capable of measuring:

1/1 second elapsed up to 12 hours.

BEFORE USING THE STOP WATCH, reset the stopwatch hands to the "0" positions.

To reset stopwatch hands:

1. PULL Crown to position "C".
2. PRESS Pusher "A" intermittently until the chronograph second hand is reset to "0".

Standard stopwatch measurement:

1. PRESS Pusher "A" to start timing.
2. PRESS Pusher "A" to stop timing.
3. PRESS Pusher "B" to reset.

Accumulated elapsed time measurement:

1. PRESS Pusher "A" to start timing.
2. PRESS Pusher "A" to stop timing.
3. PRESS Pusher "A" to restart timing.
4. PRESS Pusher "A" to stop 2nd timing.
5. PRESS Pusher "B" to reset.

6,9,12 THREE-EYE CHRONOGRAPH WITH & WITHOUT DATE



Crown position "A", "B" & "C".
Pushers "A" (top) & "B" (bottom)
12 o'clock eye "1/10 seconds elapsed"
9 o'clock eye "minutes elapsed"
6 o'clock eye "seconds elapsed"

This chronograph watch has 3 functions:

TIME, CALENDAR, STOPWATCH

TIME

To set the time:

1. PULL Crown to "C" position.
2. TURN Crown either way to correct time.
3. PUSH Crown into "A" position.

CALENDAR

To set the calendar:

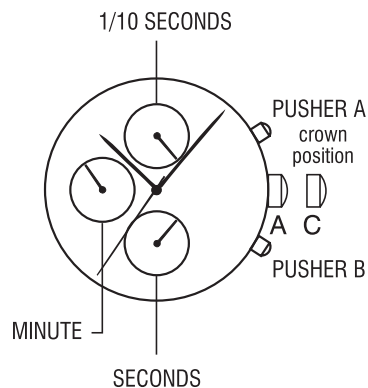
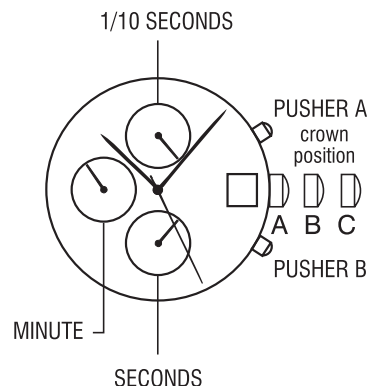
1. PULL out Crown to "B" position.
2. TURN Crown clockwise to correct date.
3. PUSH in Crown to "A" position.

NOTE: The date changes automatically every 24 hours.

STOPWATCH

The stopwatch is capable of measuring:
1/10 seconds elapsed up to one second (top eye).
Minutes elapsed up to one hour (middle eye).
Seconds elapsed up to one minute (bottom eye)

BEFORE USING THE STOP WATCH, reset the stopwatch hands to the "60" and "0" positions.





To reset stopwatch hands:

1. PULL Crown to position “C”.
2. PRESS Pusher “A” intermittently until the top eye hand is reset to “0”.
3. PRESS Pusher “B” intermittently until the middle and top eye hands is reset to “60”.

NOTE: PRESSING and HOLDING either Pusher “A” or “B” will cause the hands to continue to move until the pusher is released.

If the stopwatch hands move improperly:

1. PULL out the Crown to “B” position.
2. PRESS Pushers “A” & “B” simultaneously for 3 seconds.
3. RELEASE Pushers, stopwatch hands will move 180 degrees.
4. PUSH Crown in to “A” position.

Standard stopwatch measurement:

1. PRESS Pusher “A” to start timing.
2. PRESS Pusher “A” to stop timing.
3. PRESS Pusher “B” to reset.

Timing 2 competitors:

1. PRESS Pusher “A” to start timing.
2. PRESS Pusher “B” to stop timing.
3. PRESS Pusher “A” to stop timing of second event.
4. PRESS Pusher “B” to view time of second event.
5. PRESS Pusher “B” to reset.

Split time:

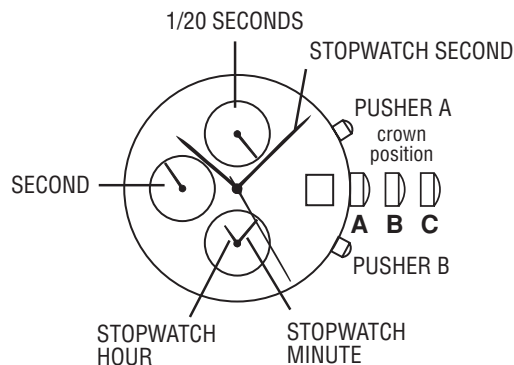
1. PRESS Pusher “A” to start timing.
2. PRESS Pusher “B” to stop split.
3. PRESS Pusher “B” to begin again.
4. PRESS Pusher “A” to stop.
5. PRESS Pusher “B” to reset.

6, 9, 12 THREE EYE

1/20 SECOND CHRONOGRAPH WITH DATE



Crown position “A”, “B” & “C”.
Pushers “A” (top) & “B” (bottom).
6 o’clock eye “hour & minutes elapsed”.
9 o’clock eye “second”.
12 o’clock eye “1/20 seconds elapsed”.



This chronograph watch has 3 functions:

TIME, STOPWATCH, CALENDAR.

TIME

To set the time:

1. PULL Crown to “C” position.
2. TURN Crown either way to correct time.
3. PUSH Crown in to “A” position.

CALENDAR

To set the calendar:

1. PULL out Crown to “B” position.
2. TURN Crown clockwise to correct date.
3. PUSH in Crown to “A” position.

NOTE: The date changes automatically every 24 hours.

Do not set the date between 9:00 PM and 1:00 AM.

STOPWATCH

The stopwatch is capable of measuring:

- Hour & Minutes elapsed up to 12 hours (bottom eye).
- 1/20 Seconds elapsed up to 12 hours (top eye).
- Seconds elapsed up to 12 hours.



BEFORE USING THE STOP WATCH, reset the stopwatch hands to the “60” and “12 o’clock” positions.

To reset stopwatch hands:

1. PULL Crown to position “C”.
2. PRESS Pusher “A” for 2 seconds until the stopwatch hour, minute and second hand is reset to “0”.

Standard stopwatch measurement:

1. PRESS Pusher “A” to start timing.
2. PRESS Pusher “A” to stop timing.
3. PRESS Pusher “B” to reset.

Split time:

1. PRESS Pusher “A” to start timing.
2. PRESS Pusher “B” to stop split.
3. PRESS Pusher “B” to begin again.
4. PRESS Pusher “A” to stop.
5. PRESS Pusher “B” to reset.

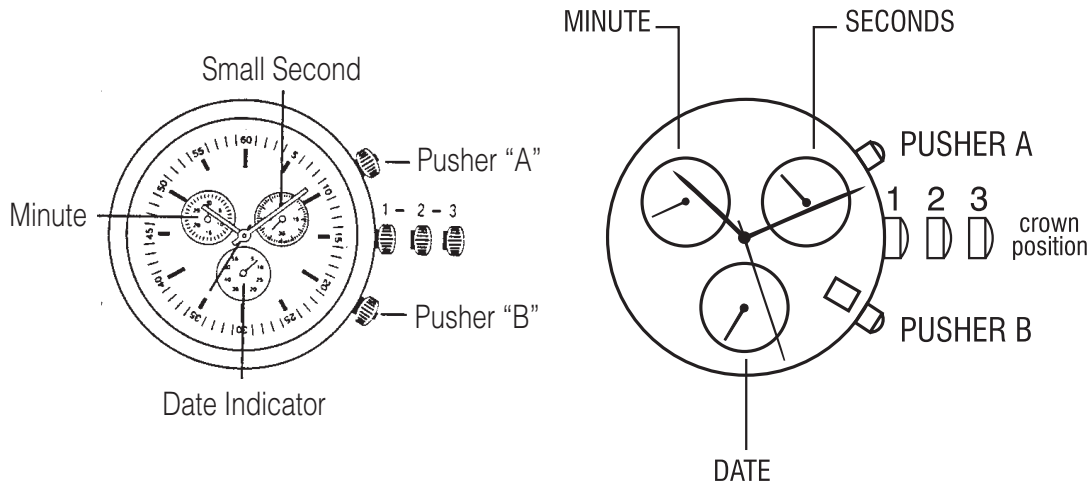
Accumulated elapsed time measurement:

1. PRESS Pusher “A” to start timing.
2. PRESS Pusher “A” to stop timing.
3. PRESS Pusher “A” to restart timing.
4. PRESS Pusher “A” to stop 2nd timing.
5. PRESS Pusher “B” to reset.

Timing 2 competitors:

1. PRESS pusher “A” to start timing.
2. PRESS pusher “B” to stop timing of first event. Stopwatch continues to run internally.
3. PRESS pusher “A” to stop timing of second event.
4. PRESS pusher “B” to view time of second event.
5. PRESS pusher “B” to reset.

2,6,10 THREE-EYE CHRONOGRAPH WITH OR WITHOUT DATE WINDOW



NOTE: Crown position “1”, “2” & “3”

NOTE: Pushers “A” (top) & “B” (bottom)

NOTE: Left eye “minute totalizer”

NOTE: Right eye “small second”

NOTE: Centre eye “date indicator”

This chronograph watch has 3 functions:

TIME, CALENDAR, STOPWATCH

TIME

To set the time:

1. PULL Crown to position “3” .
2. TURN Crown either way to correct time.
3. PUSH Crown to position “1” .



CALENDAR

To set the calendar:

1. PULL Crown to position “2” .
2. TURN Crown clockwise to correct the date.
3. PUSH in Crown to position “1” .

STOPWATCH

The stopwatch is capable of measuring:

1. Minutes elapsed up to 30 minutes (left eye).
2. Chronograph hand 1/5 second

BEFORE USING THE STOPWATCH, reset the stopwatch hands to the “60” position by mean of pusher “B”. If stopwatch Hands move improperly, reset the hands as follow:

To reset stopwatch hands:

1. PRESS Pusher “A” & “B”.
2. PRESS Pusher “B” intermittently until the left eye hand is reset to “0”.
3. PRESS Pusher “A” intermittently until the chronograph hand reset to “60”.
4. PRESS Pusher “A” & “B”.

NOTE: PRESSING and HOLDING either Pusher “A” or “B” will cause the hands to continue to move until the pusher is released.

Standard stopwatch measurement:

1. PRESS Pusher “A” to start timing.
2. PRESS Pusher “A” to stop timing.
3. PRESS Pusher “B” to reset.

Accumulated elapsed time measurement:

1. PRESS Pusher “A” to start timing.
2. PRESS Pusher “A” to stop timing.
3. PRESS Pusher “A” to restart timing.
4. PRESS Pusher “A” to stop 2nd timing.
5. PRESS Pusher “B” to reset.



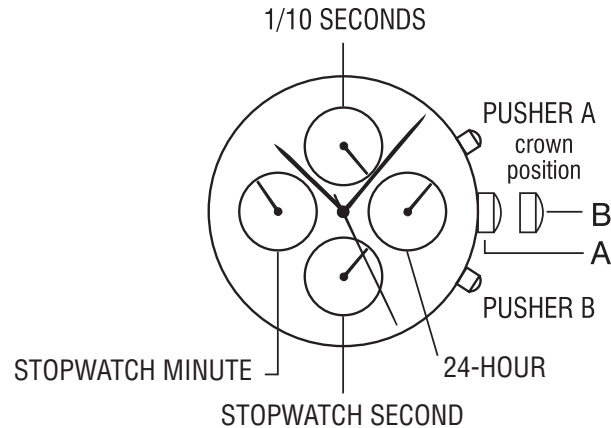
Split time measurement:

1. PRESS Pusher "A" to start timing.
2. PRESS Pusher "B" to split.
3. PRESS Pusher "B" to begin again.
4. PRESS Pusher "A" to stop.
5. PRESS Pusher "B" to reset.

Timing 2 competitors:

1. PRESS Pusher "A" to start timing of first event.
2. PRESS Pusher "B" to stop timing of first event. Stopwatch continues to run internally.
3. PRESS Pusher "A" to stop timing of second event.
4. PRESS Pusher "B" to view time of second event.
5. PRESS Pusher "B" to reset.

3,6,9,12 FOUR-EYE CHRONOGRAPH



NOTE: Crown position “A” & “B”

NOTE: Pushers “A” (top) & “B” (bottom)

NOTE: 12 o'clock eye “1/10” or seconds elapsed”

NOTE: 9 o'clock eye “minutes elapsed”

NOTE: 6 o'clock eye “seconds elapsed”

NOTE: 3 o'clock eye “24-hour”

This chronograph watch has 2 functions:

TIME, STOPWATCH.

TIME

To set the time:

1. PULL Crown to “B” position.
2. TURN Crown either way to correct time.
3. PUSH Crown in to “A” position.

STOPWATCH

The stopwatch is capable of measuring:

1/10 seconds elapsed up to 60 minutes (top eye).

Minutes elapsed up to one hour (middle eye).

Seconds elapsed up to one minute (bottom eye)



BEFORE USING THE STOPWATCH, reset the stopwatch hands to the “60” and “0” positions.

To reset stopwatch hands:

1. PULL Crown to position “B”.
2. PRESS Pusher “A” intermittently until the top eye hand is reset to “0”.
3. PRESS Pusher “B” intermittently until the minute and second eye hands reset to “60”.

NOTE: PRESSING and HOLDING either Pusher “A” or “B” will cause the hands to continue to move until the pusher is released.

Standard stopwatch measurement:

1. PRESS Pusher “A” to start timing.
2. PRESS Pusher “A” to stop timing.
3. PRESS Pusher “B” to reset.

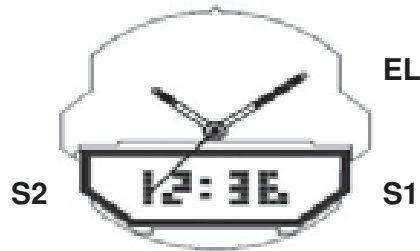
Accumulated elapsed time measurement:

1. PRESS Pusher “A” to start timing.
2. PRESS Pusher “A” to stop timing.
3. PRESS Pusher “A” to restart timing.
4. PRESS Pusher “A” to stop 2nd timing.
5. PRESS Pusher “B” to reset.

Split time measurement:

1. PRESS Pusher “A” to start timing.
2. PRESS Pusher “B” to stop split.
3. PRESS Pusher “B” to begin again.
4. PRESS Pusher “A” to stop.
5. PRESS Pusher “B” to reset.

ANA-DIGIT



FEATURES

Hour, Minute, Second
Month, Date
Back Light (EL)

NORMAL TIME MODE

1. PRESS S1 once to view Month & Date
2. PRESS S1 twice to view Second
3. PRESS S2 once, ""Time"" & ""Date"" mode will be displayed alternatively
PRESS S1 twice, back to Time mode"
4. PRESS EL to light-up display

SETTING SEQUENCE

1. PRESS S2 twice to set "Month"; Press S1 to advance
2. PRESS S2 once to set "Date"; Press S1 to advance
3. PRESS S2 once to set "Hour"; Press S1 to advance
4. PRESS S2 once to set "Minute"; Press S1 to advance
5. PRESS S2 once when setting is complete. Normal time will be displayed (Press S1 if time mode does not flash).

DIGITAL WITH ALARM / DUAL TIME / CHRONOGRAPH



FEATURES

Hour, Minute, Second

Day, Date, Month

Dual Time, Alarm, Timer

Chronograph 1/100 Second with Split Back Light (EL)

OPERATION MODES

1. PRESS S3 once to view Time, Day, Date, Month
2. PRESS S3 once to view Alarm
3. PRESS S3 once to view Chrono
5. PRESS S3 once to set Timer
6. PRESS S3 again back to Time mode

SETTING SEQUENCE

A) NORMAL TIME SETTING .

1. HOLD S2 2 seconds to set "Second"; Press S1 for 00
2. PRESS S3 once to set "Minute"; Press S1 to advance
3. PRESS S3 once to set "Hour"; Press S1 to advance
4. PRESS S3 once to set hour display; Press S1 to set "12H" / "24H"
5. PRESS S3 once to set "Month"; Press S1 to advance
6. PRESS S3 once to set "Date"; Press S1 to advance
7. PRESS S3 once to set "Day"; Press S1 to advance
8. PRESS S2 once when setting is complete. Normal time will be displayed.



B) DUAL TIME SETTING .

1. PRESS S1 to Dual Time
2. HOLD S2 2 seconds to set "Minute"; Press S1 for 00
3. PRESS S3 once to set "Hour"; Press S1 to advance
4. PRESS S2 once when setting is complete. Normal time will be displayed.

C) ALARM SETTING

PRESS S3 to Alarm Mode

1. PRESS S1 once to on "Alarm" ONLY
2. PRESS S1 once to on "Chime" ONLY
3. PRESS S1 once to on "Alarm" & "Chime"
4. PRESS S1 once to off "Alarm" & "Chime"
5. HOLD S2 2 seconds to set "Hour"; Press S1 to advance
6. PRESS S3 once to set "Minute"; Press S1 to advance
7. PRESS S2 once when setting is complete. Return to Alarm Mode.

D) CHRONOGRAPH

PRESS S3 twice to Chronograph function

1. PRESS S1 to "Start" / "Stop" timing
2. PRESS S2 to "Split" time
3. PRESS S1, then S2 to "Reset"

E) TIMER

PRESS S3 three times to Time Mode

1. HOLD S2 2 seconds to set "Hour"; Press S1 to advance
2. PRESS S3 once to set "Minute"; Press S1 to advance
3. PRESS S2 once when setting is complete.
4. PRESS S1 to "Start" / "Stop"
5. PRESS S2 to "Reset"

When counting complete, alarm will sound.

DIGITAL WITH ALARM, CHRONOGRAPH 1/100 SEC, COUNTDOWN & DUAL TIME



FEATURES

Hour, Minute, Second
Day, Date, Month
Dual Time, Alarm, Countdown
Chronograph 1/100 Second with lap control
Back Light (EL)

SETTING SEQUENCE

A) NORMAL TIME SETTING

1. HOLD S2 3 seconds to "Second"; Press S1 or S3 for 00
2. PRESS S2 once to set "Minute"; Press S1 or S3 to advance / backward
3. PRESS S2 once to set "Hour"; Press S1 or S3 to advance / backward
4. PRESS S2 once to set "Year"; Press S1 or S3 to advance / backward
5. PRESS S2 once to set "Month"; Press S1 or S3 to advance / backward
6. PRESS S2 once to set "Day"; Press S1 or S3 to advance / backward
7. HOLD S2 3 seconds to return to normal time display.



B) DUAL TIME SETTING

1. PRESS S1 to Dual Time
2. HOLD S2 2 seconds to set "Minute"; Press S1 for 00
3. PRESS S3 once to set "Hour"; Press S1 to advance
4. PRESS S2 once when setting is complete. Normal time will be displayed.

C) ALARM SETTING

PRESS S3 to Alarm Mode

1. PRESS S1 to "Alarm 1" – "Alarm 5"
2. HOLD S2 2 seconds until "AL" flash
PRESS S1/S3 to set "Alarm" / "Chime"
3. PRESS S2 once to set "Hour" Press S1 or S3 to advance / backward
4. PRESS S2 once to set "Minute" Press S1 or S3 to advance / backward
5. HOLD S2 3 seconds when setting is complete. Return to Alarm Model.

D) COUNTDOWN TIMER SETTING

- (i) PRESS S3 twice to Countdown Timer function [T1] (1~90 mins)
 - 1) HOLD S2 2 seconds to set "Minute"; Press S1/S3 to advance / backward
 - 2) HOLD S2 3 sec to end setting
 - 3) PRESS S2 to start/stop countdown
- (ii) PRESS S1 to get into Countdown timer [T2] (from normal time to preset time – within 24hrs)
 - 1) HOLD S2 3 seconds to set "Hour"; Press S1/S3 to advance / backward
 - 2) PRESS S2 once to set "Minute" Press S1 or S3 to advance / backward
 - 3) HOLD S2 3 sec to end setting
 - 4) PRESS S2 to start/stop countdown. Time different between Normal time & Preset time will be shown



- (iii) PRESS S1 to get into Countdown Day Timer [T3]
- 1) HOLD S2 3 seconds to set "Year"; Press S1/S3 to advance / backward
 - 2) PRESS S2 once to set "Month" Press S1 or S3 to advance / backward
 - 3) PRESS S2 once to set "Day" Press S1 or S3 to advance / backward
 - 4) PRESS S2 once when setting is complete.

E) CHRONOGRAPH

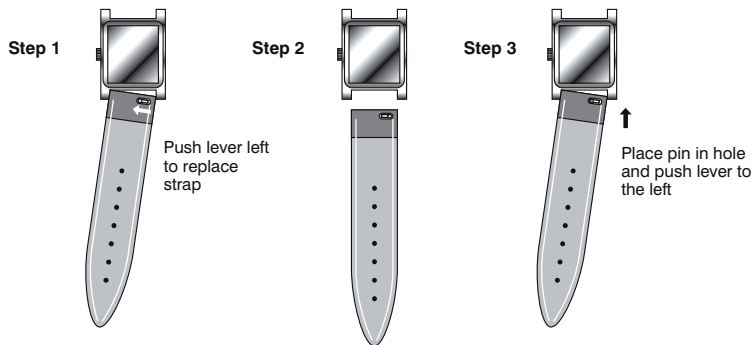
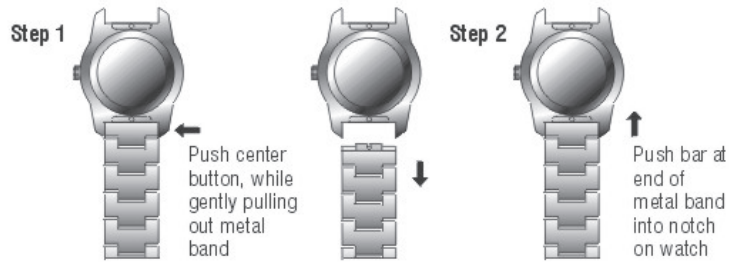
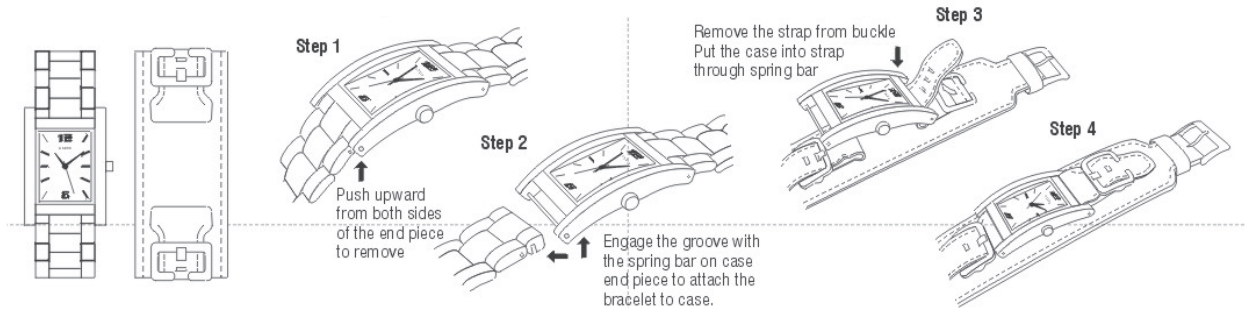
PRESS S3 three times to Chronograph Mode

- 1) PRESS S1 to select LAP (LAP) or Split (SPL) option
- 2) PRESS S2 to start/stop
- 3) PRESS S1 to get Lap/Split time
- 5) HOLD S2, then press S1 to "Reset"

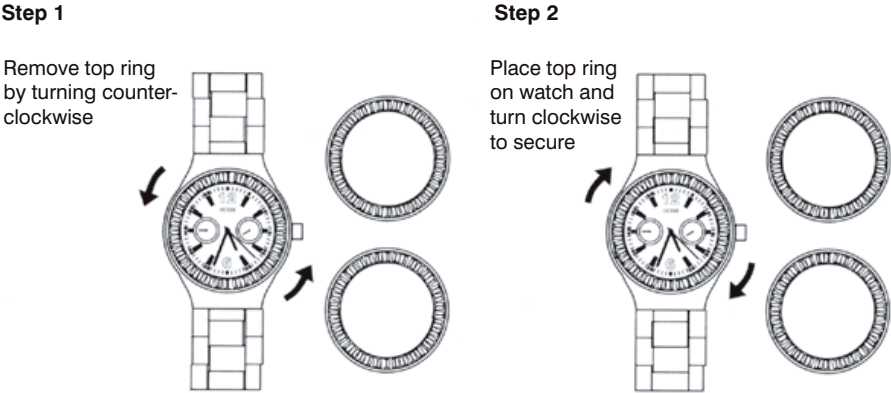
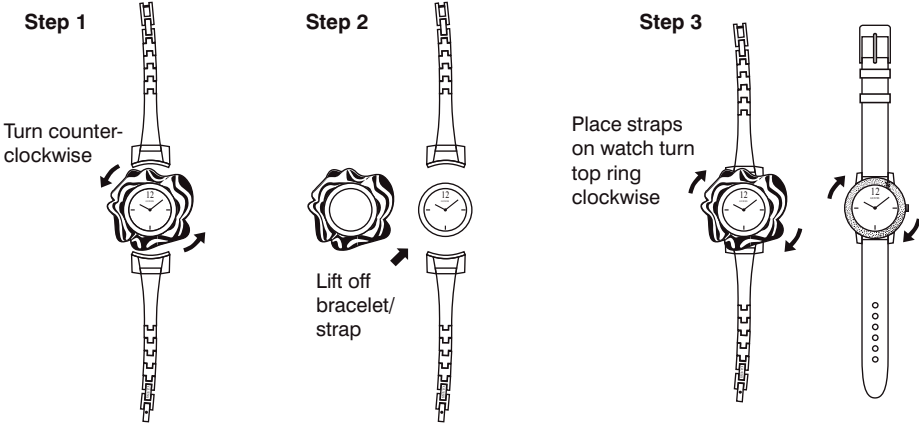
GUESS

■ INTERCHANGEABLES

HOW TO REMOVE STRAPS AND METAL BANDS



HOW TO REPLACE TOP RINGS



GUESS

■ CARE & WARRANTY



WATER RESISTANT CARE AND DETAILS

Watches marked Guess Waterpro® or Guess Steel are Water Resistant from 3ATM to 10ATM only as long as lens, buttons, crown, case, caseback and gaskets remain intact.

Do NOT operate crowns or buttons when the watch is wet or under water.

Watches with no water resistant markings are splashproof and are not suitable for swimming.

Rinse watch with fresh water after exposure to salt water. Always wipe watch dry.

CARE AND SAFETY MEASURES

Water resistance isn't permanent. In the course of time, the gaskets of the cases may become worn and reduce the water resistance of the watches.

BATTERY CARE & SAFETY MEASURES

The battery contains a small amount of mercury. Please recycle or dispose of properly. Visit www.watchbatteryrecycle.org for more information.

STRAP CARE & DETAILS

LEATHER STRAPS

Non-Waterpro straps should not be submerged in water.

Waterpro straps are water resistant, but are not impervious to water & should not be submerged in water for extended periods of time.

SILICONE OR POLYURETHANE SPORT STRAPS

If strap does not have adjustable links, shorten by cutting off the unneeded portion from the long end of the strap with a sharp pair of scissors.

Do NOT expose straps to gases or chemicals (Ex: fragrance sprays, detergents, insecticides, etc.) Stains made by dye, paints and oily substances may be difficult to remove. Due to the composition of the material, straps may harden or discolor after extensive use.





TWO YEAR WARRANTY

U.S. Customers: We offer a Two Year Warranty on all purchases made from July 1st, 2017.

Any purchases made prior to July 1st, 2017 hold a 10 Year Limited Warranty. In the event of a defect or malfunction within the warranty period from date of purchase, your watch will be repaired or replaced, at our option. The limited warranty does not apply to normal wear and tear, abuse or water damage and excludes batteries, case, strap or bracelet; does not cover costs, parts or labor, shipping & handling, defects or damage caused by any source other than GUESS Watches. Proof of purchase is required for all Warranty Repairs. If you live in the U.S. contact us for more information. For International Customers: If you live outside the U.S., please contact your local representative for Country Specific warranty information.

WATCH REPAIR

Return the watch, carefully packed (do not send in original packaging as it will not be returned) and insured to:

145 Woodward Ave., Norwalk, CT 06854, ATTN: Repair Dept.

Enclose your payment and the completed warranty repair coupon.

Any questions, call customer service at
1-(800)2-GUESS-5 or (1-800-248-3775)
Mon. - Fri., 8:30am - 5:00pm EST.

WATCH REPAIR



Please complete this form and enclose it with your carefully packed watch for repair.
Add a money order for \$8.50 (postage & handling). If paying by VISA or MASTERCARD,
please see below.

NAME _____

ADDRESS _____

STATE / CITY _____ ZIP CODE _____

PHONE # _____ DATE SENT _____

	PRICE EACH	TOTAL PRICE
BATTERY	\$6	_____
WATERPRO CASE CRYSTAL	\$12	_____
SHIPPING/HANDLING	\$8.50	_____
TOTAL CHARGES		_____

(Residents of CT & NY please apply appropriate sales tax)

TOTAL CHARGES (with sales tax if applicable) _____

Total charges may be paid with VISA or MASTERCARD or money order.

If paying by charge card, please fill in below. DO NOT send cash.

VISA MASTERCARD (circle one)

CARD# _____

EXPIRATION DATE / AUS _____

SIGNATURE _____

